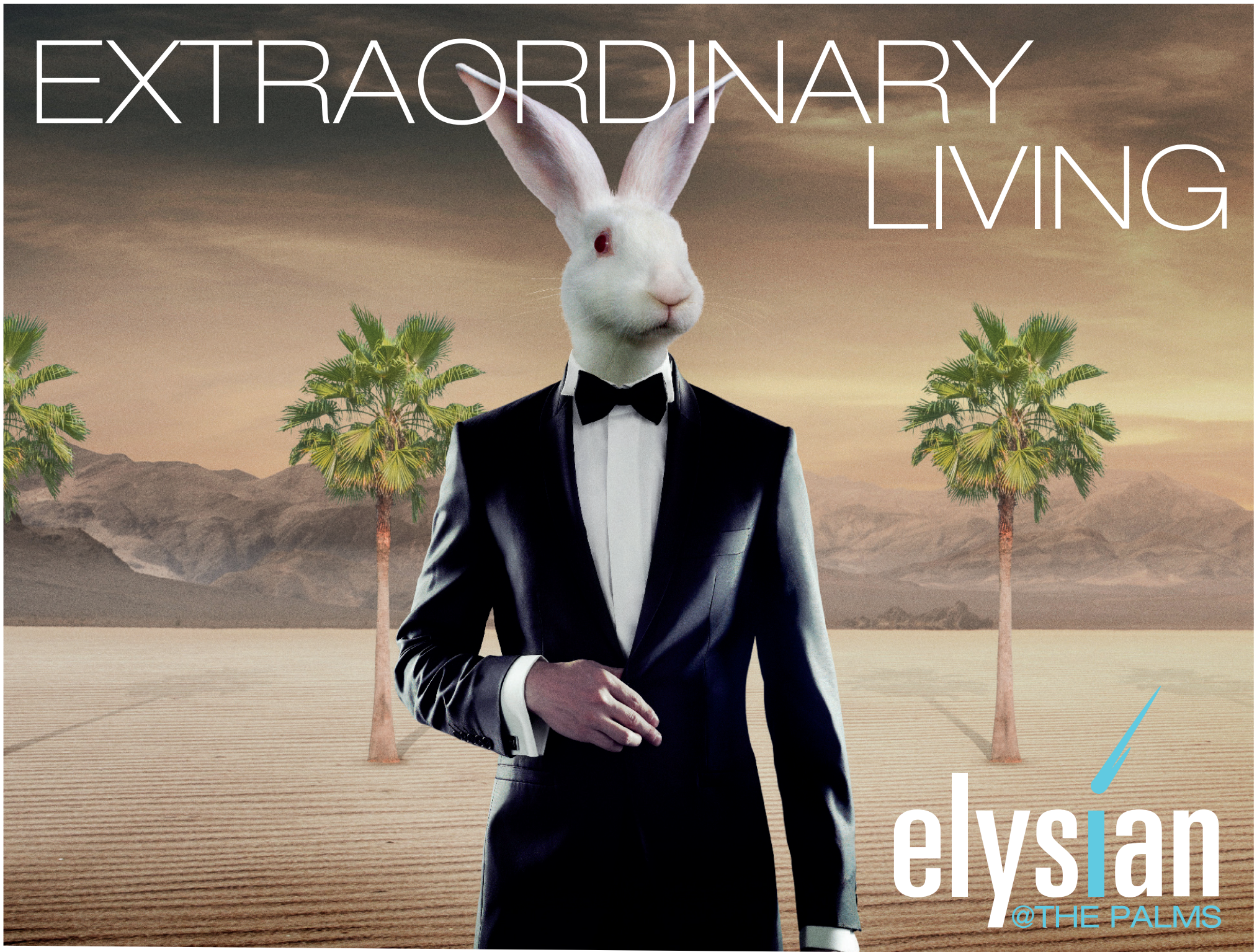


# EXTRAORDINARY LIVING



  
**elysian**  
@THE PALMS





**Elysian at The Palms** is Las Vegas' newest community for extraordinary living. Offering the best of both worlds, Elysian at The Palms is conveniently located steps from the high-octane energy of the Strip and minutes from the natural wonders of Vegas' desert canyons and picturesque mountains!

Designed by Calida Studios with a fresh and unique vision, this eclectic collection of one and two-bedroom residences boasts a variety of signature amenities designed to satisfy your every need. Each unit is appointed with ultra-modern designer fixtures, timeless hardware, stainless steel appliances and spacious balconies offering stunning views!





Revel in the latest innovations in habitat design and technology in a secure, pet-friendly atmosphere. Fire up your fitness at our full cardio and strength training facility. Find your center in the yoga studio or strive for a personal best in the spin room. Then, unwind with a treatment at the massage room, a dip in the resort-style pool or a cocktail by the fire pits!

TRK



Attuned to your every need, **Elysian at The Palms** was thoughtfully created to provide you with a world of conveniences. Start your day by enjoying a gourmet cup of Joe at the Coffee lounge, exhale while taking in spectacular views from our indoor/outdoor sky lounge and satisfy late night cravings with a quick snack at the Mini Market! And just minutes away, you'll find the best in dining, shopping, entertainment and award-winning schools!

# THE HOME YOU'VE IMAGINED. THE LIFESTYLE YOU DESERVE.

## Community Features

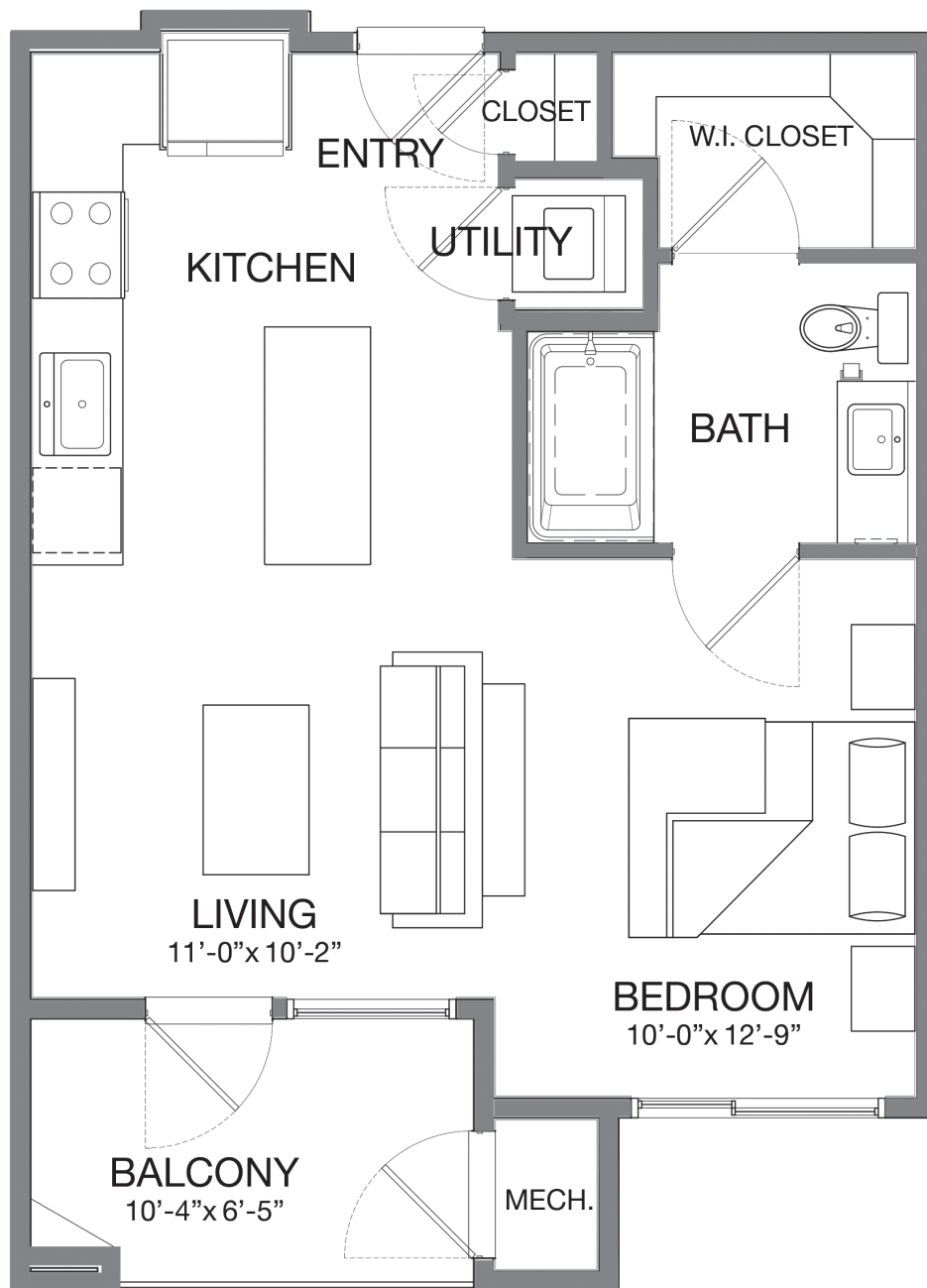
- Designed by Calida Studios
- Highly social lifestyle
- Indoor and outdoor sky lounge providing panoramic views of the Las Vegas Strip
- Lushly landscaped resort-style pool, spa and recreation decks
- Private poolside cabanas
- Outdoor poolside lounge with BBQ grill
- Secure parking garage
- Seating areas with 75" TVs
- Intimate seating areas with fire pits
- Picnic and BBQ areas
- Dog area
- Hammock farm
- Coffee lounge
- Business center
- Resident lobby
- Concierge services to cater to personalized resident needs
- 12,000 square foot clubhouse featuring:
  - Wine tasting lounge and party area
  - Hospitality bar with Wi-Fi
  - Game rooms
  - Poker lounge
  - High-end indoor golf simulator
  - Yoga and spin rooms
  - Full cardio and strength training facility
  - Massage room
  - Tanning room
- Walking distance to the Las Vegas Strip
- Pet friendly dogs of all sizes\*

\* Some breed restrictions may apply. Contact leasing team for details.

## Residence Amenities

- Minimum 9-foot ceilings in all units
- Contemporary designer fixtures and hardware including upgraded cabinetry and quartz countertops in all kitchens and bathrooms
- Smart home automation, allowing residents to remotely control comfort settings (lighting, locks and thermostats)
- Stainless steel appliances, including microwave, dishwasher, range and refrigerator/freezer
- Full height quartz backsplash in kitchen
- Kitchen cabinets feature extra-large pot drawers and pull out trash drawers
- Pantry closets
- Under mount sinks in kitchen and bathrooms
- Spacious balconies offering pool, courtyard, mountain and Strip views
- Over-sized tub in all units
- Full size showers in select units
- State-of-the-art LED lighting
- Plush wall-to-wall carpeting in bedrooms
- Wood-inspired flooring in kitchens and living rooms
- Custom designed walk-in closets in all units
- Coat closets in all units
- Pre-wired for telephone, cable TV, high-speed internet access and ceiling fans
- Tankless water heaters
- Discounted cable/internet service through a partnership with Cox
- Stacked washer/dryers included
- Individual climate control
- Sprinkler system for fire safety
- Storage space available



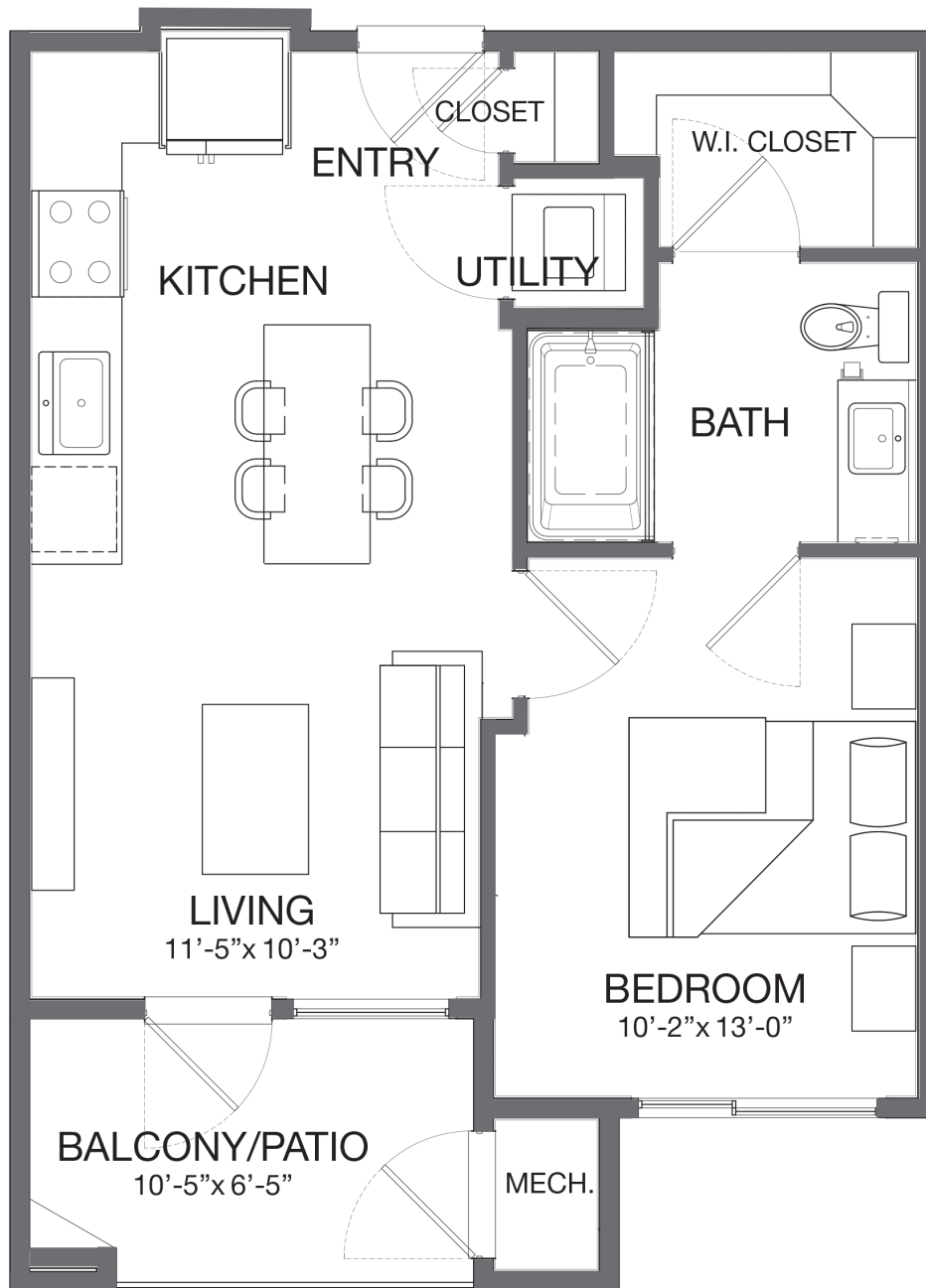


**A1**

1 Bedroom / 1 Bathroom  
Approximately 619 sq. ft.

Square footage is approximate and may vary by unit.  
Availability and pricing subject to change.



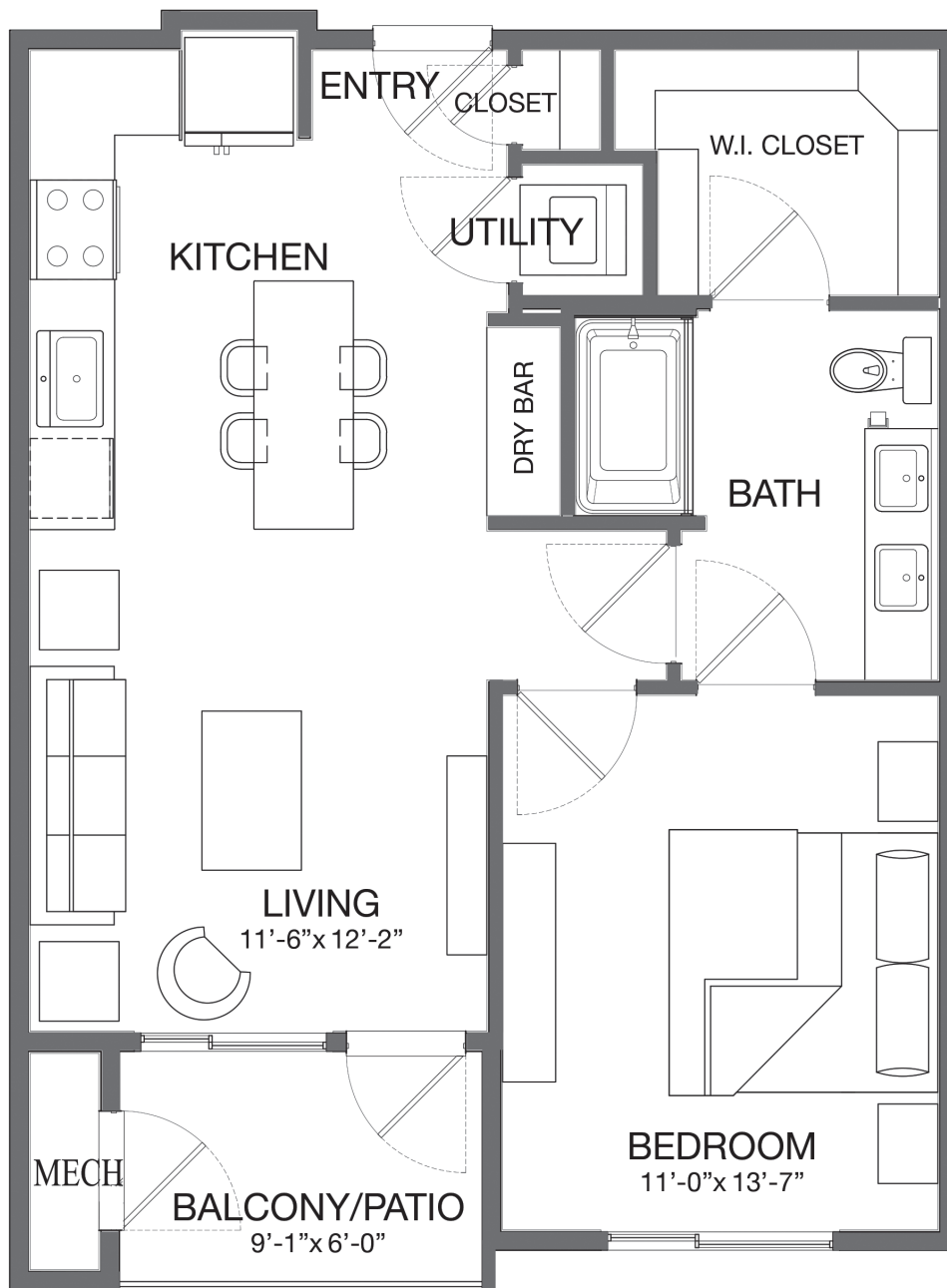


### A1.2

1 Bedroom / 1 Bathroom  
Approximately 619 sq. ft.

Square footage is approximate and may vary by unit.  
Availability and pricing subject to change.



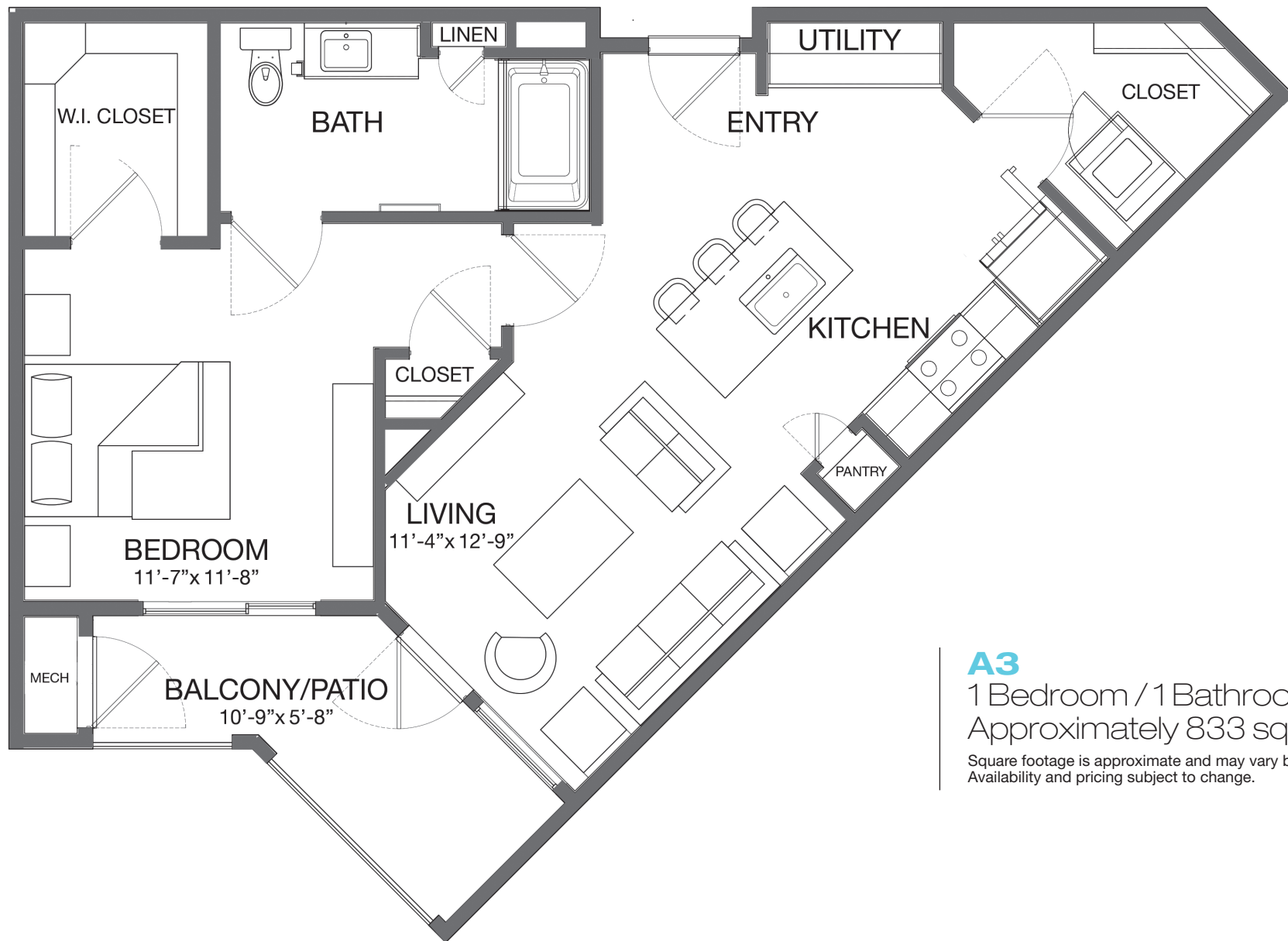


**A2**

1 Bedroom / 1 Bathroom  
Approximately 745 sq. ft.

Square footage is approximate and may vary by unit.  
Availability and pricing subject to change.



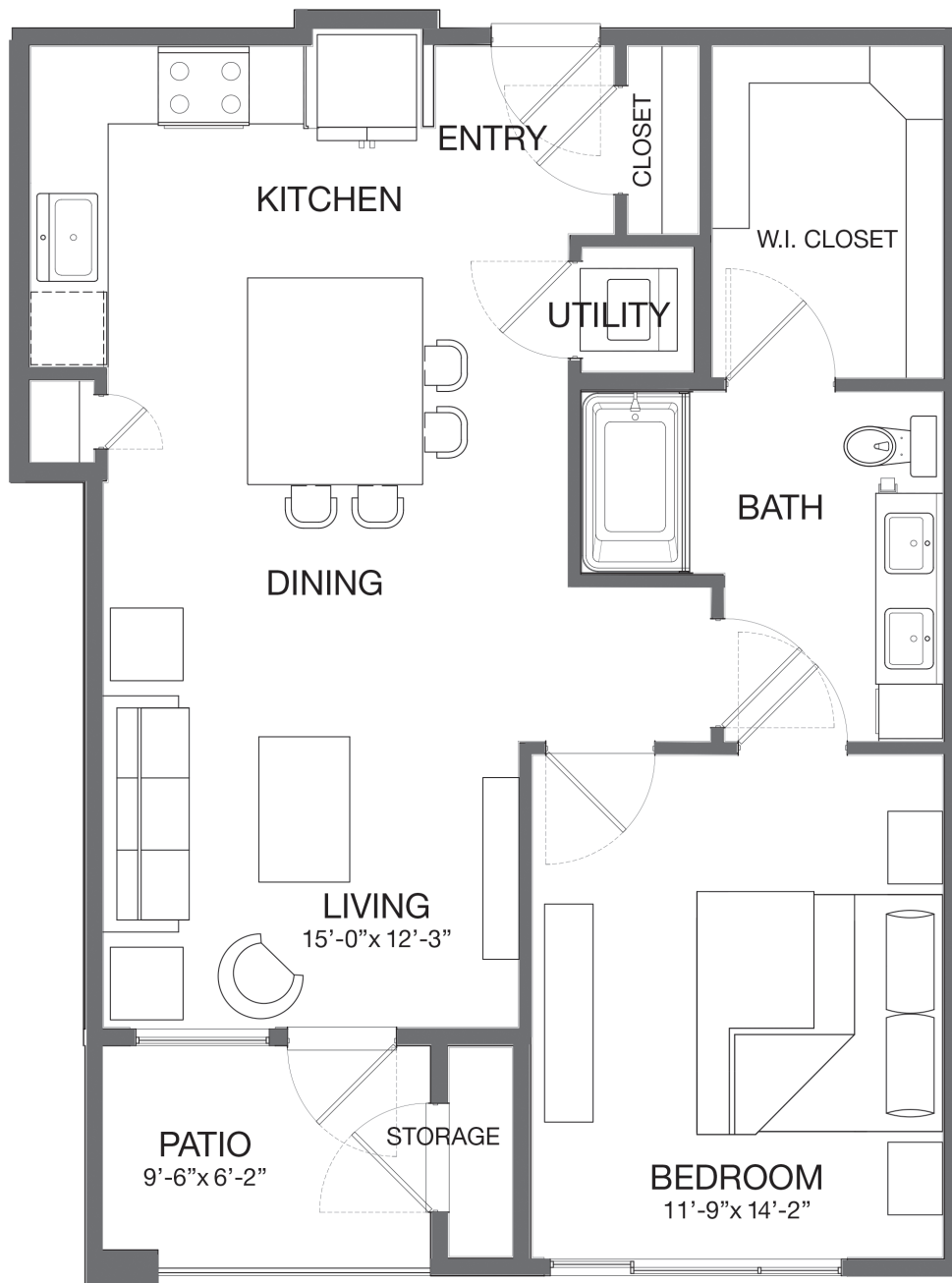


**A3**

1 Bedroom / 1 Bathroom  
Approximately 833 sq. ft.

Square footage is approximate and may vary by unit.  
Availability and pricing subject to change.



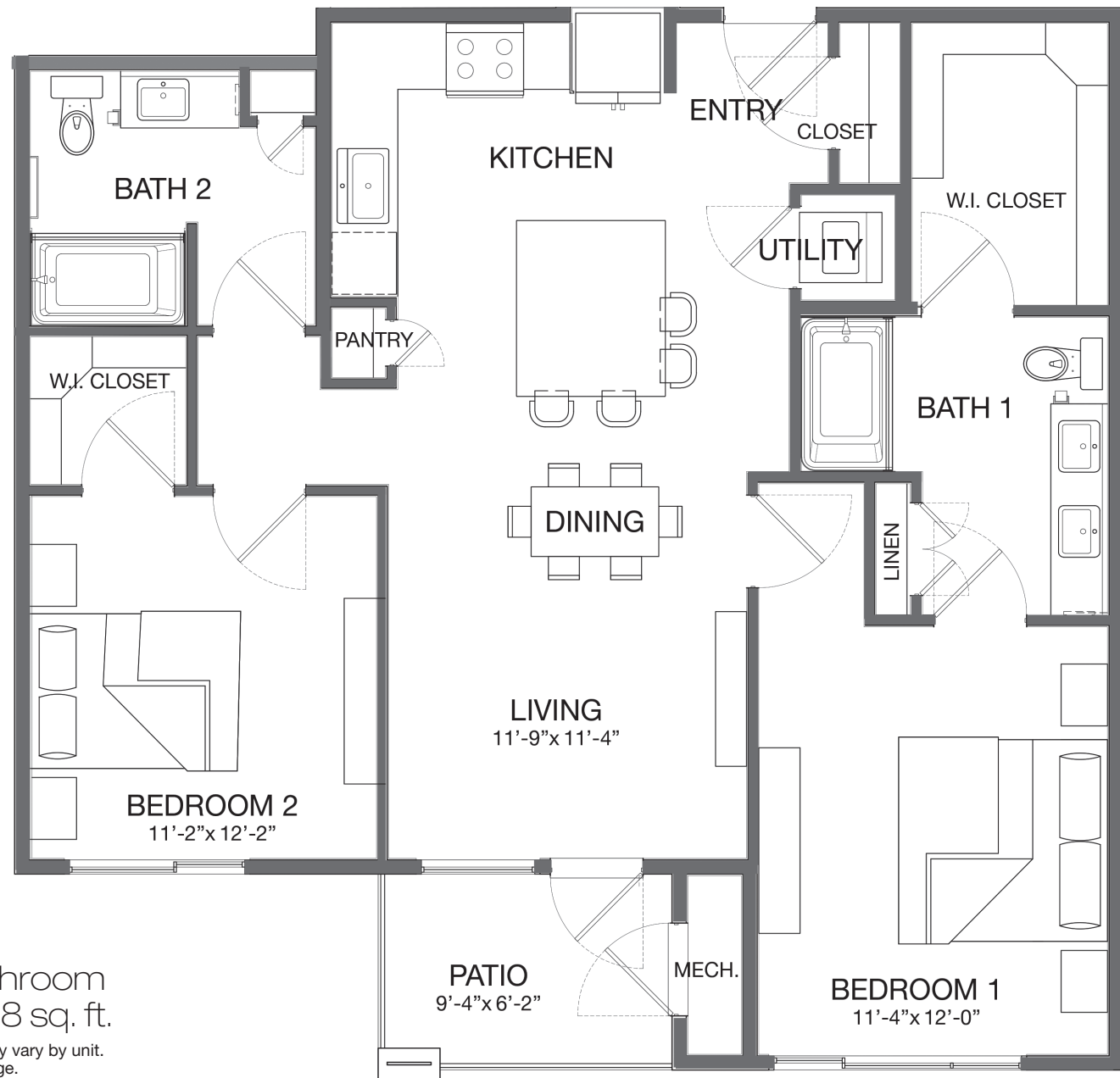


**A5**

1 Bedroom / 1 Bathroom  
Approximately 854 sq. ft.

Square footage is approximate and may vary by unit.  
Availability and pricing subject to change.



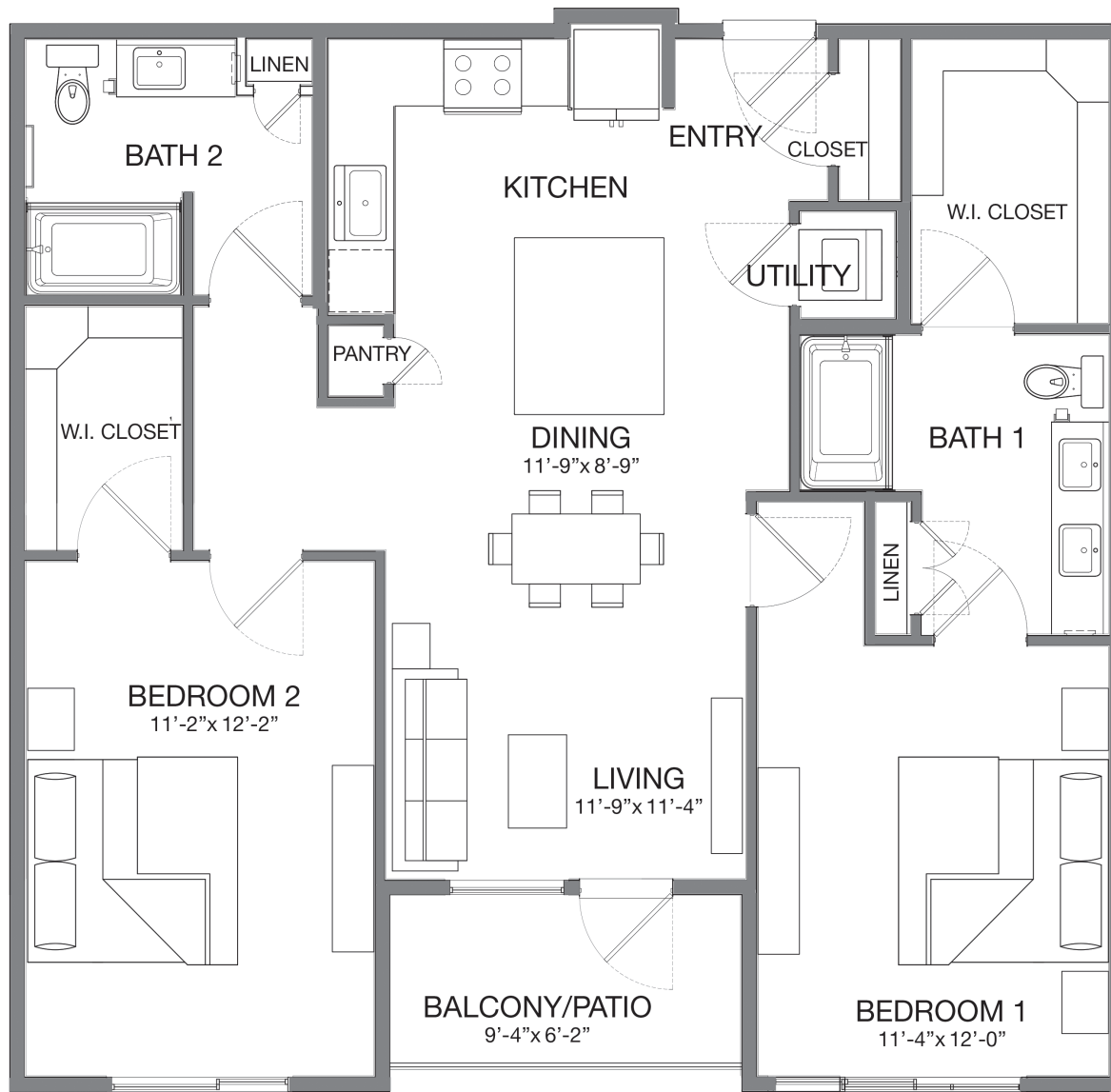


## B1

2 Bedroom / 2 Bathroom  
Approximately 1,158 sq. ft.

Square footage is approximate and may vary by unit.  
Availability and pricing subject to change.



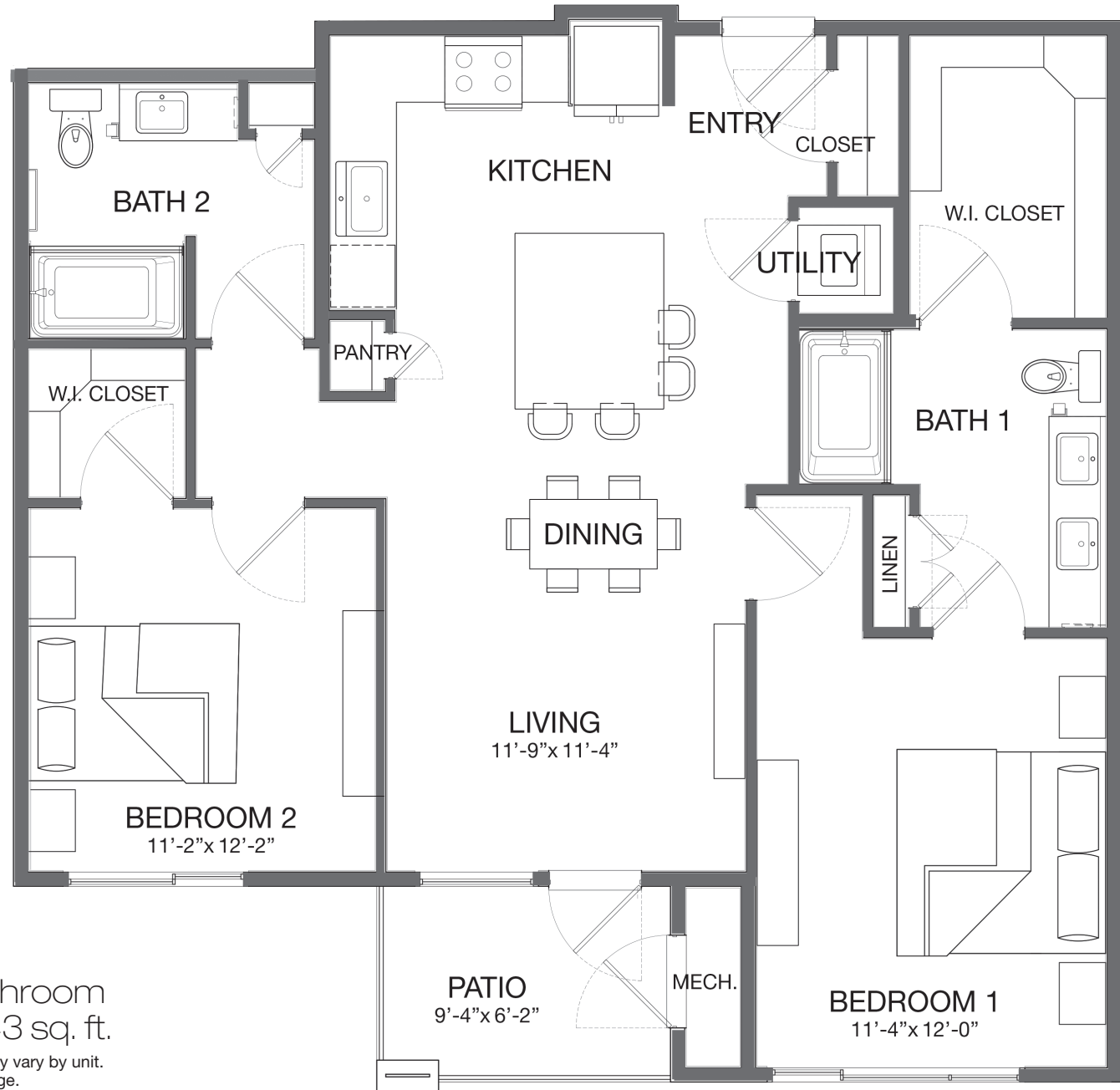


### B1.1

2 Bedroom / 2 Bathroom  
Approximately 1,225 sq. ft.

Square footage is approximate and may vary by unit.  
Availability and pricing subject to change.

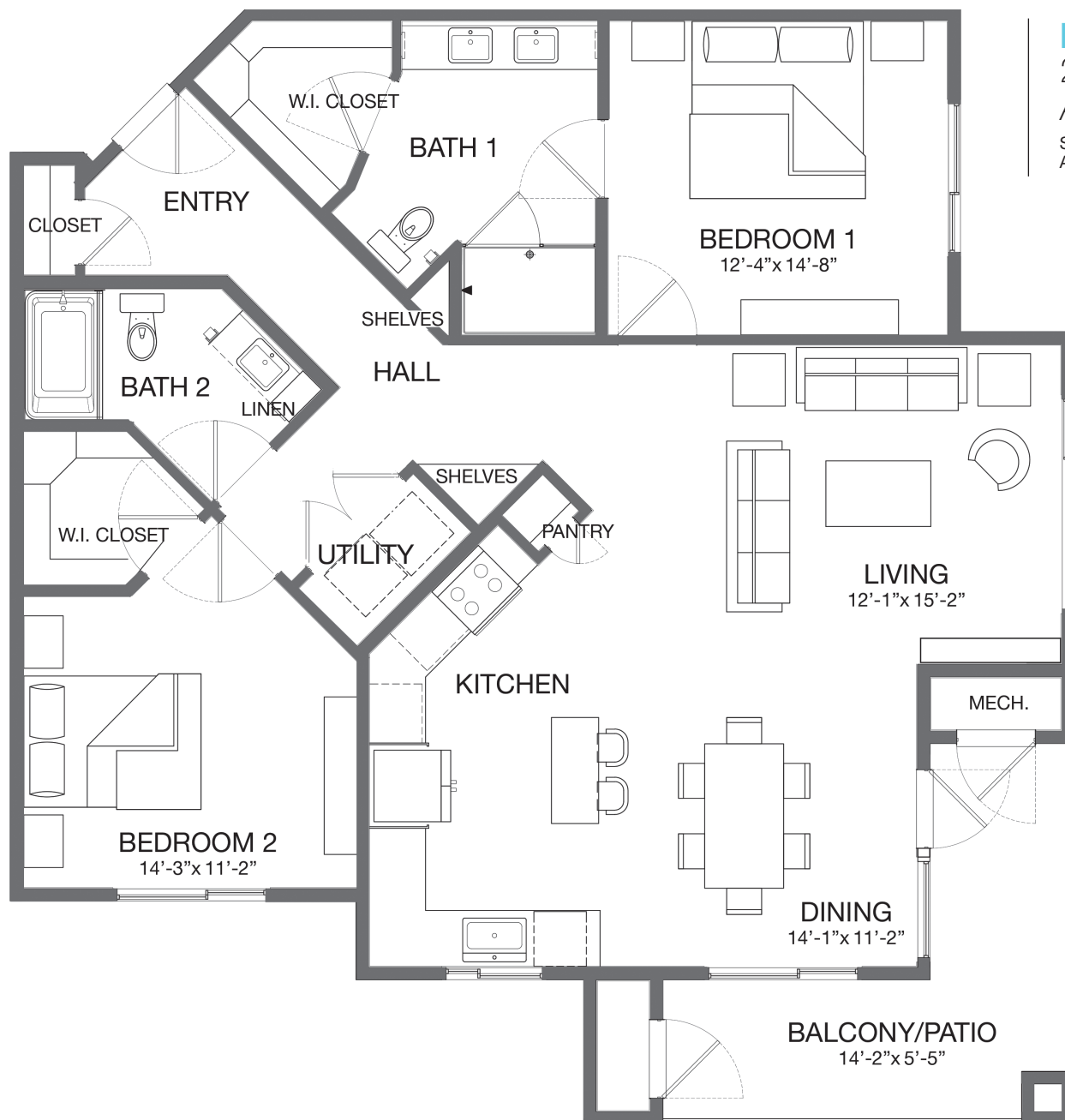




## B1.4

2 Bedroom / 2 Bathroom  
Approximately 1,143 sq. ft.

Square footage is approximate and may vary by unit.  
Availability and pricing subject to change.

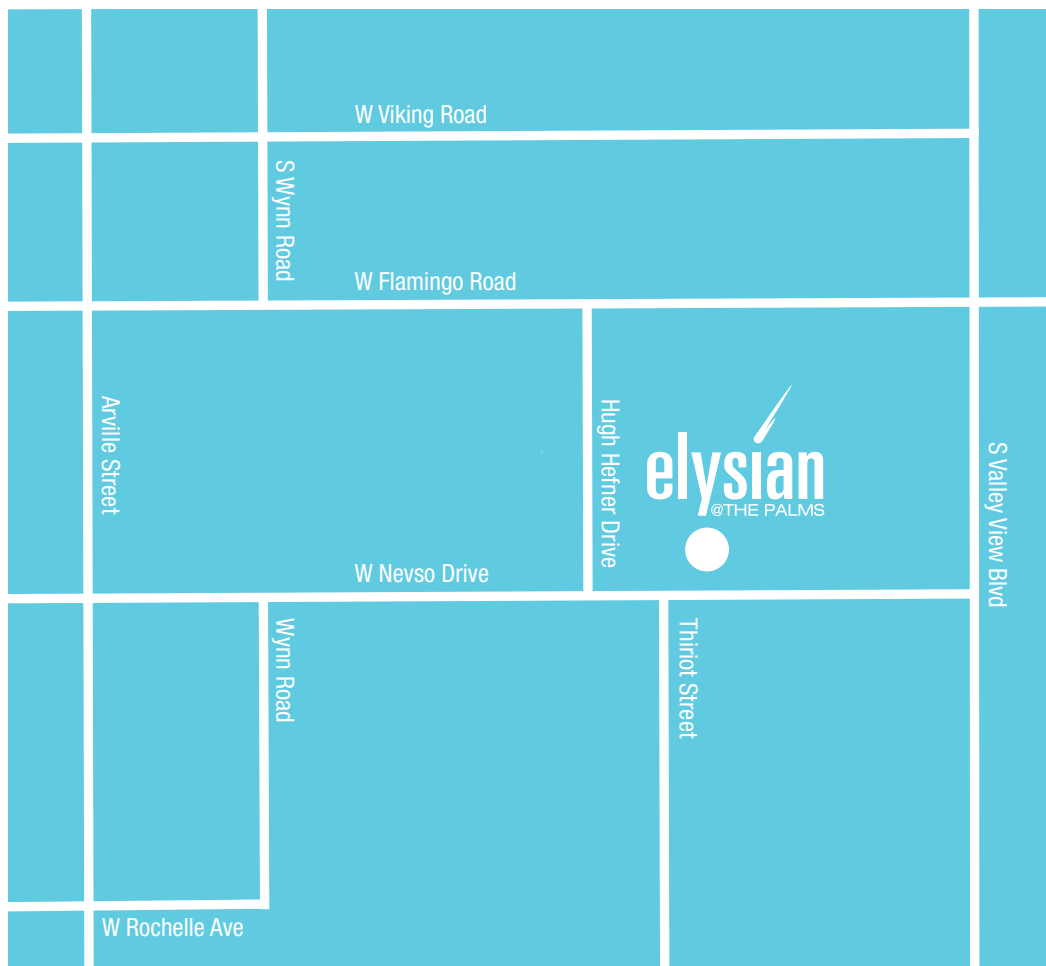


**B2**

2 Bedroom / 2 Bathroom  
Approximately 1,475 sq. ft.

Square footage is approximate and may vary by unit.  
Availability and pricing subject to change.





3850 W. Nevso Drive  
Las Vegas, NV 89103

[Elysianatthepalms.com](http://Elysianatthepalms.com)

